



Yanhee International Hospital

PLASTIC SURGERY CENTER

BREAST AUGMENTATION (MAMMOPLASTY)

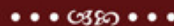
Surgery to enhance feminine contours with the use of implants. This can be done for women who, for personal reasons, feel their breast size is too small. It can restore volume lost due to weight loss or following pregnancy and may achieve better symmetry when breasts are moderately disproportionate in size and shape.

PRICE:

<400 cc	: 2,600 US\$ (1 night stay)
400-525 cc	: 3,000 US\$ (1 night stay)
550-800 cc	: 3,900 US\$ (2 nights stay)
1,000 cc	: 7,200 US\$ (2 nights stay)
Saline	: 2,600 US\$ (1 night stay)

ANESTHESIA: General anesthesia

DURATION: 1-2 hrs



NOTE: 1. Prices are subject to change without prior notice.
2. Further details of procedures may be requested through e-mail.

Website: www.yanhee.net E-mail: inter_contact@yanhee.net, info@yanhee.net
Hotline: (+66) 02-879-0300 ext. 7 (available 7AM-10PM Bangkok Local Time)

Pre- Op Instructions:

- ◆ Consultation with surgeon
- ◆ Evaluation for other medical conditions
- ◆ No intake of food or water 8 hrs prior to surgery
- ◆ Prepare support bra
- ◆ Stop smoking & alcohol intake at least 2 weeks before surgery
- ◆ Anticoagulants, vitamins, hormones (including birth control pills), anti-depressants & some other medications also to be stopped at least 2 weeks before surgery.

NOTE: Please provide Yanhee with a complete list of medications each patient is taking so proper advice can be given as to which



PROCEDURE:

- ◆ Incision is made either in the inframammary fold, around the areola or in the armpit
- ◆ Surgeon will lift breast tissue & skin to create a pocket (subglandular, submuscular)
- ◆ Implant is placed on the pocket made
- ◆ Incisions are closed with sutures
- ◆ Bandages are applied and fixed with surgical tape

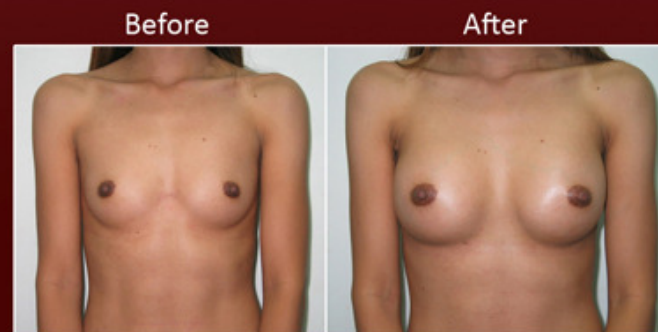
POST-OP INSTRUCTIONS:

- ◆ Get enough rest, eat fruits & vegetables, & avoid alcohol & smoking for at least 1 month.
- ◆ Start ambulating as soon as possible.
- ◆ Avoid strenuous activities for 4 weeks.
- ◆ Refrain from physical contact with breasts for 3-4 weeks.
- ◆ May shower 48 hrs after removal of drain tubes.
- ◆ Follow-up check with the surgeon will be 7 days after for suture removal and instructions on how to properly massage breasts to avoid capsular contraction.
- ◆ Only support bras without wire should be used after sutures are removed.
- ◆ According to doctor's instructions, bras may be worn about 1-2 weeks after surgery when most of the swelling has gone down. Support bras are recommended to maintain breast shape.
- ◆ May wear bra with wire 4-6 months after surgery.

BREAST MASSAGE PROCEDURE

- Position 1: Use both hands to gently push both breasts to bring them close together
- Position 2: Same as position 1 but breasts are pushed away from each other.
- Position 3: Push both breasts downwards.
- Position 4: Push both breasts upwards.

Remarks: *Massage gently to all 4 positions and repeat many times as directed.*



YANHEE INTERNATIONAL HOSPITAL

Beauty can be yours.....